



Eucaseal

The EUCASEAL is an additional and optional gel closure sealing system that provides a reliable sealing of coaxial connectors used at the transition between jumper and antenna or jumper and feeder cables on GSM antennas, exposed to the outside environment. The housing contains an innovative gel material and provides an efficient moisture block. The ease of installation and the long-term protection makes it a reliable and cost effective solution.

EUCASEAL suited for the sealing of:

- ***Jumper to antennas, TMA, ...***
- ***Jumper to feeder cables***

exposed to the outside environment

BENEFITS AND FEATURES

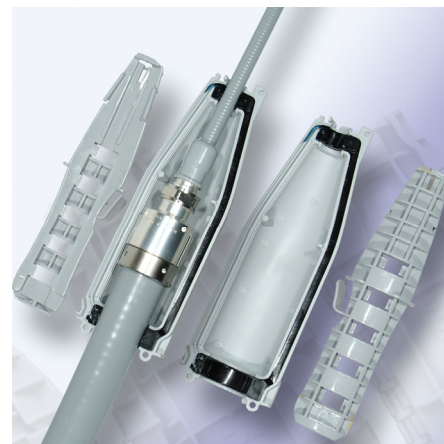
- ***Tool-less installation: No tape, no mastics or tools required for installation and removal.***
- ***Easy and fast installation (only a few seconds)***
- ***Wraparound and no disconnection of the connector***
- ***Easily removable and re-usable***
- ***Reliable protection over a wide temperature range (-30°C to +60°C)***
- ***Gel material provides an effective barrier against ingress of water and other contaminants - IP68 according to EN 60529***
- ***Robust clamshell enclosure***
- ***Protection against excessive bending of the cable***
- ***Available in black and grey UV-resistant polymer***



ES-12-BOX



ES-12-78



ES-12-114 GREY



DATA SHEET

Gel closure sealing system

Kabelwerk | **EUPEN** AG

DSES-Rev02/2008-12-15

cable

TECHNICAL DATA

Characteristics	ES-12-BOX	ES-12-78	ES-12-114	ES-12-158
• Application	1/2" jumper to antenna	1/2" jumper to 7/8" feeder	1/2" jumper to 1-1/4" feeder	1/2" jumper to 1-5/8" feeder
• Jumper cable type	1/2"–HIFLEX 1/2"	1/2"–HIFLEX 1/2"	1/2"–HIFLEX 1/2"	1/2"–HIFLEX 1/2"
• Jumper cable diameter [mm]	13 ... 17	13 ... 17	13 ... 17	13 ... 17
• Feeder cable type	-	7/8" 7/8" HIFLEX	1-1/4" 1-1/4" HIFLEX	1-5/8"
• Feeder cable diameter [mm]	-	27 ... 29	38 ... 40	49.5 ... 52
• Connector type	Only DIN 7-16	7-16 N	7-16 N	7-16 N
• Nut diameter (hex / circular) [mm]	32	-	-	-
• Nut height [mm]	12.5 ... 16	-	-	-
• Minimum distance between panel connectors [mm]	45	-	-	-
• Max. length of the body/junction [mm]	60	147	187	208
• Max. diameter of the body/junction [mm]	26.6	43	56	68
• Maximum dimension of the kit [mm]	95 x 51	200 x 92	245 x 99	260 x 110
• Material	UV-stabilised polymer			
• Color	Black or grey			
• Water tightness, protection rating	IP67, IP68 (1h, 1m) according to EN 60529			
• Vibration	According to IEC 60068-2-6 test Fc			
• Temperature cycling	According to IEC 60068-2-14 test Nb			
• Temperature range [°C]	-30 to +60			
• - installation [°C]	-10 to +45			

PRODUCT OVERVIEW

Product reference	Contents	Part#
• ES-12-BOX	• Clamshell enclosure with integrated gel seal	B664996
• ES-12-BOX GREY	• Closing channel(s)	B664066
• ES-12-78	• Installation instruction	B661996
• ES-12-78 GREY	• Oil	B661066
• ES-12-114		B662996
• ES-12-114 GREY		B662066
• ES-12-158		B663996
• ES-12-158 GREY		B663066

